

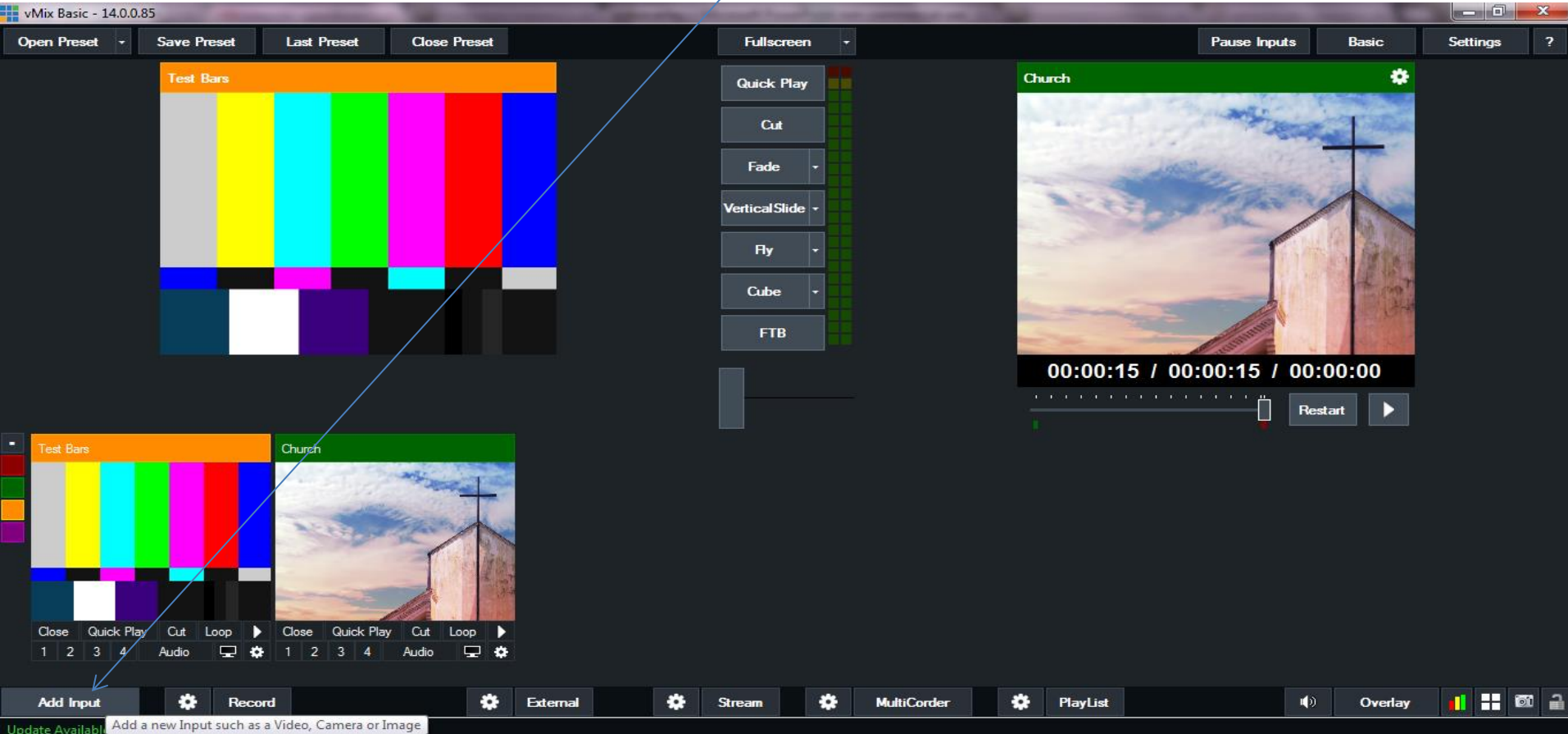
How to put overlays or titles  
on your video using VMix

There are 2 ways of putting an overlay or title on your live video

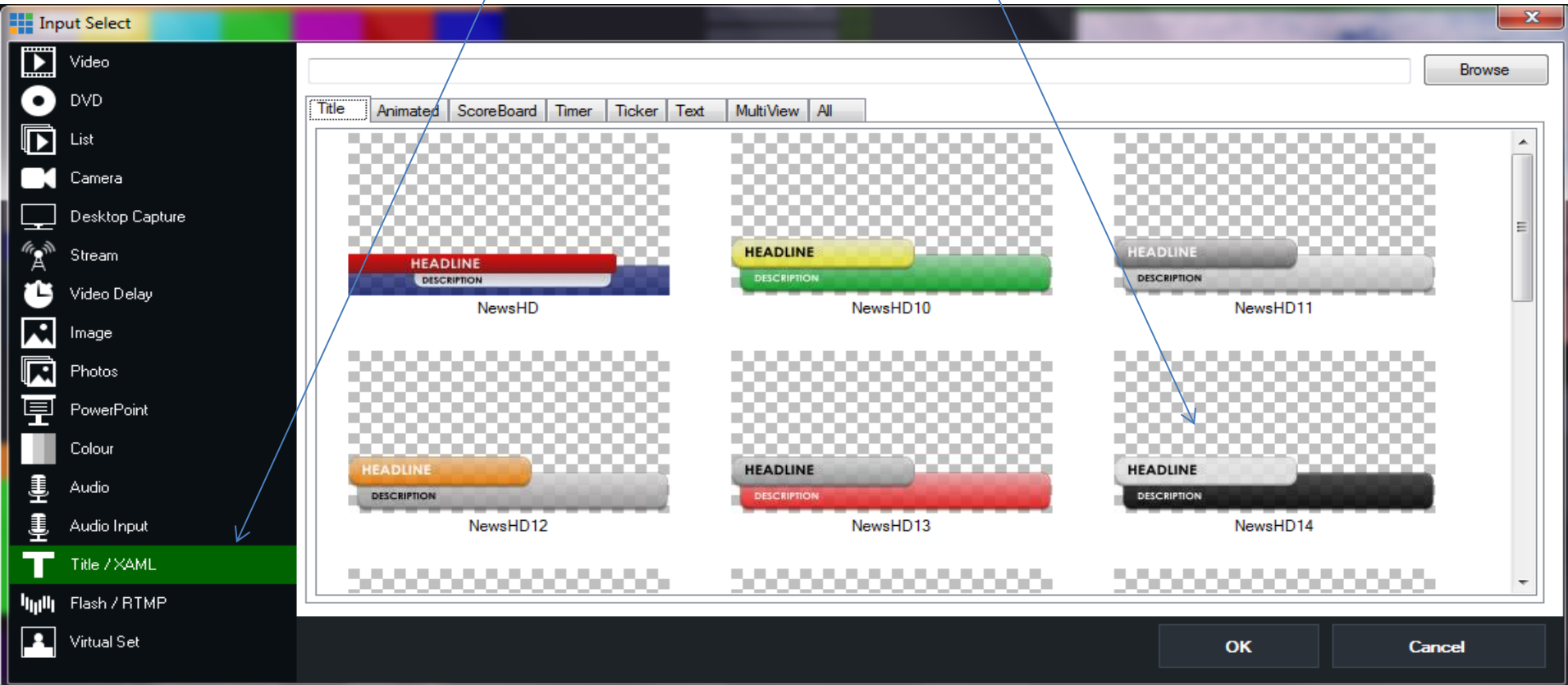
We are going to start with the built in title option

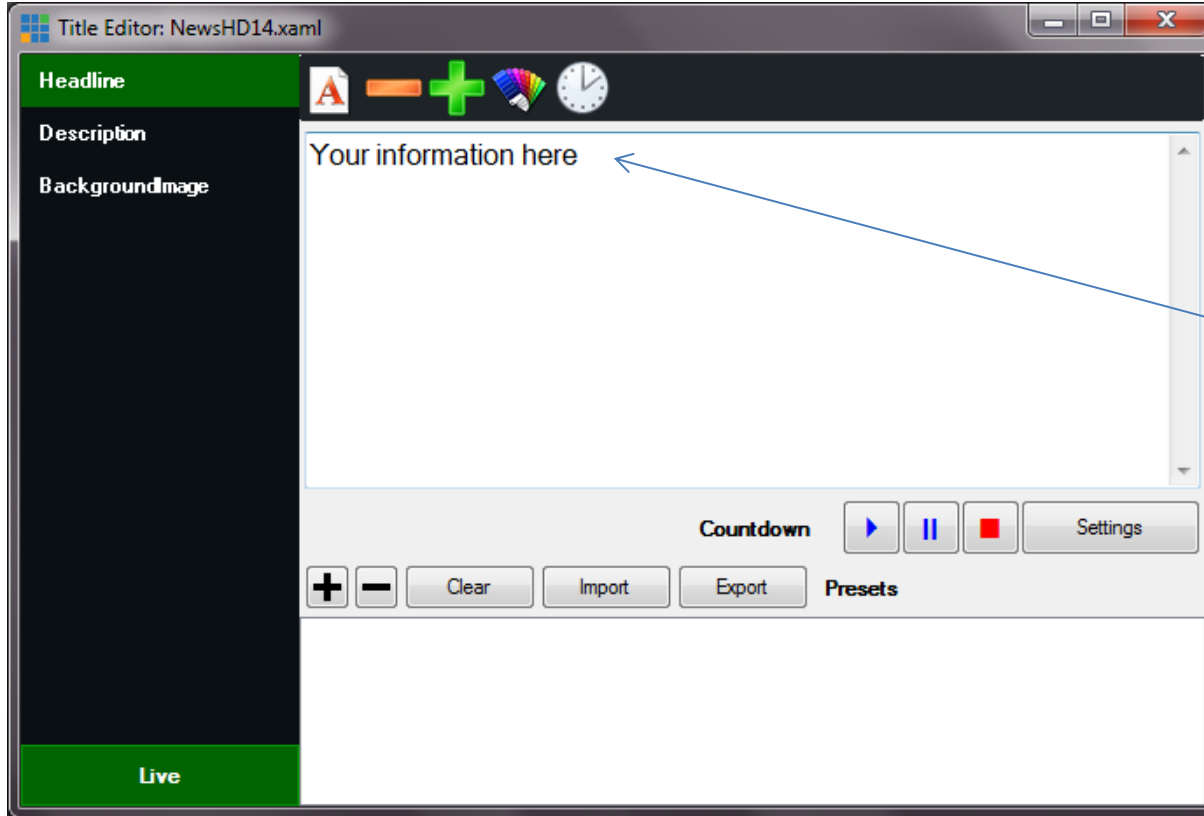
The built in option will allow you to change the text on the fly.

# Add input (lower left)



For Input Select Title / XAML then select the overlay you would like





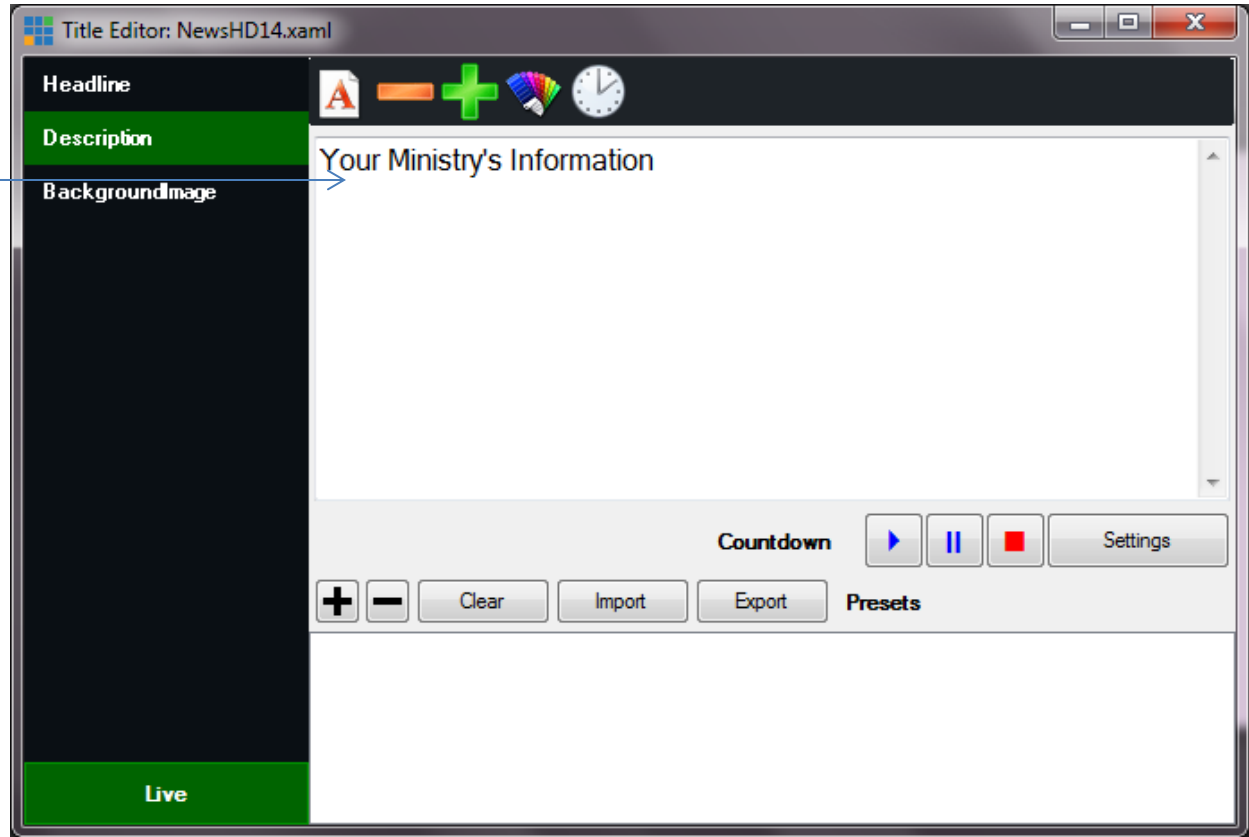
This is where you can enter your information.

Ie. Pastor Rick Smith  
This will be the top line.

This is where you  
can put your  
description or  
ministry's  
information

ie. Your Church

This would be the  
2<sup>nd</sup> line.



# Now your overlay will show up as an input

vMix Basic - 14.0.0.85

Open Preset Save Preset Last Preset Close Preset Fullscreen

Test Bars

Quick Play Cut Fade VerticalSlide Fly Cube FTB

Church

00:00:15 / 00:00:15 / 00:00:00

Restart

Test Bars Church NewsHD14.xml

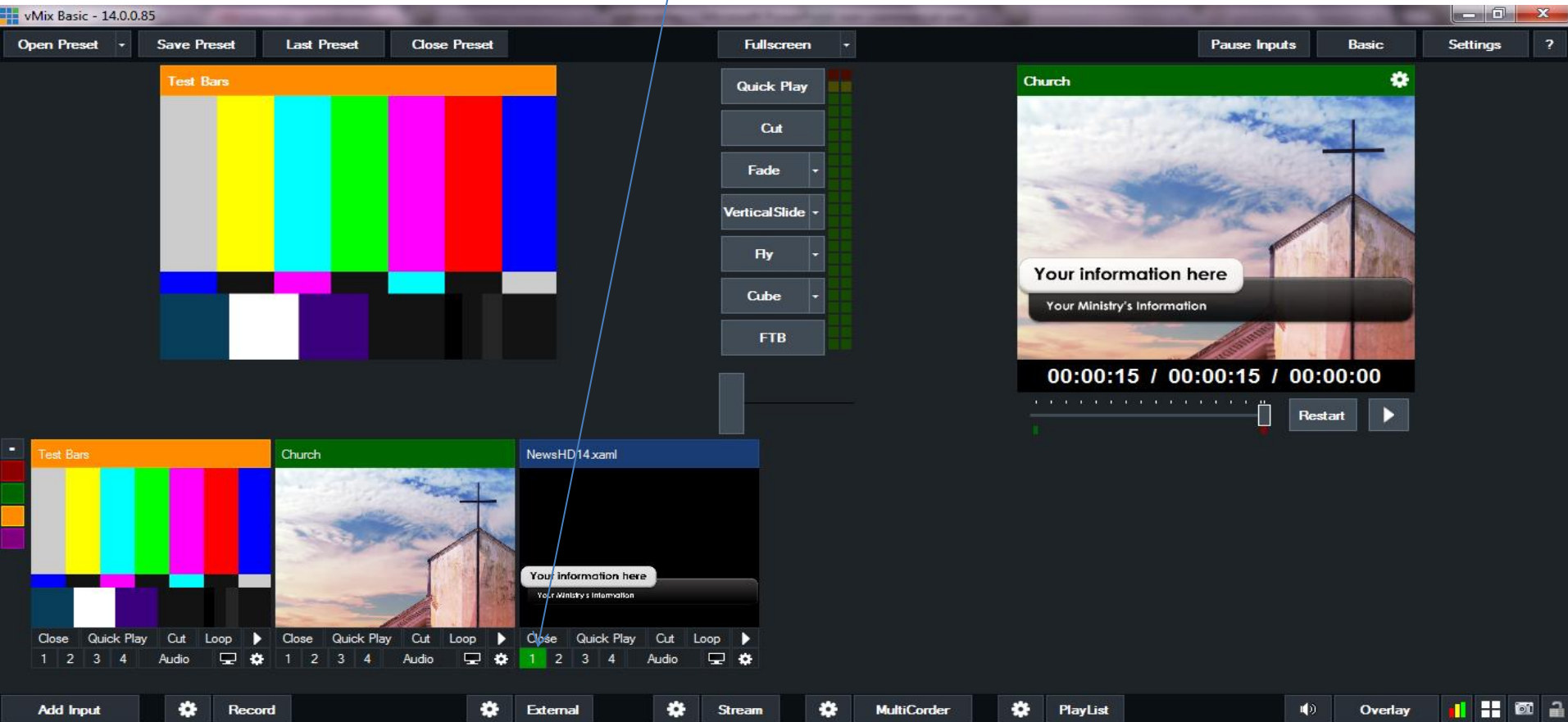
Close Quick Play Cut Loop 1 2 3 4 Audio

Add Input Record External Stream MultiCorder PlayList

Update Available EX FPS: 31 Render Time: 4 ms CPU: 2 %

The screenshot displays the vMix Basic software interface. At the top, there's a title bar with the version 'vMix Basic - 14.0.0.85' and standard window controls. Below this is a menu bar with 'Open Preset', 'Save Preset', 'Last Preset', 'Close Preset', 'Fullscreen', 'Pause Inputs', 'Basic', 'Settings', and a help icon. The main workspace is divided into several sections. On the left, there's a 'Test Bars' input showing a color calibration chart. In the center, there's a 'Church' input showing a video of a church steeple. To the right of the 'Church' input, there's a 'NewsHD14.xml' input, which is currently black. A blue arrow points from the 'Church' input to the 'NewsHD14.xml' input, indicating that the church video is being used as an input for the XML overlay. Below the main workspace, there's a row of buttons for 'Add Input', 'Record', 'External', 'Stream', 'MultiCorder', and 'PlayList'. At the bottom, there's a status bar showing 'Update Available', 'EX FPS: 31', 'Render Time: 4 ms', and 'CPU: 2 %'.

To turn the overlay on/off press the “1” button

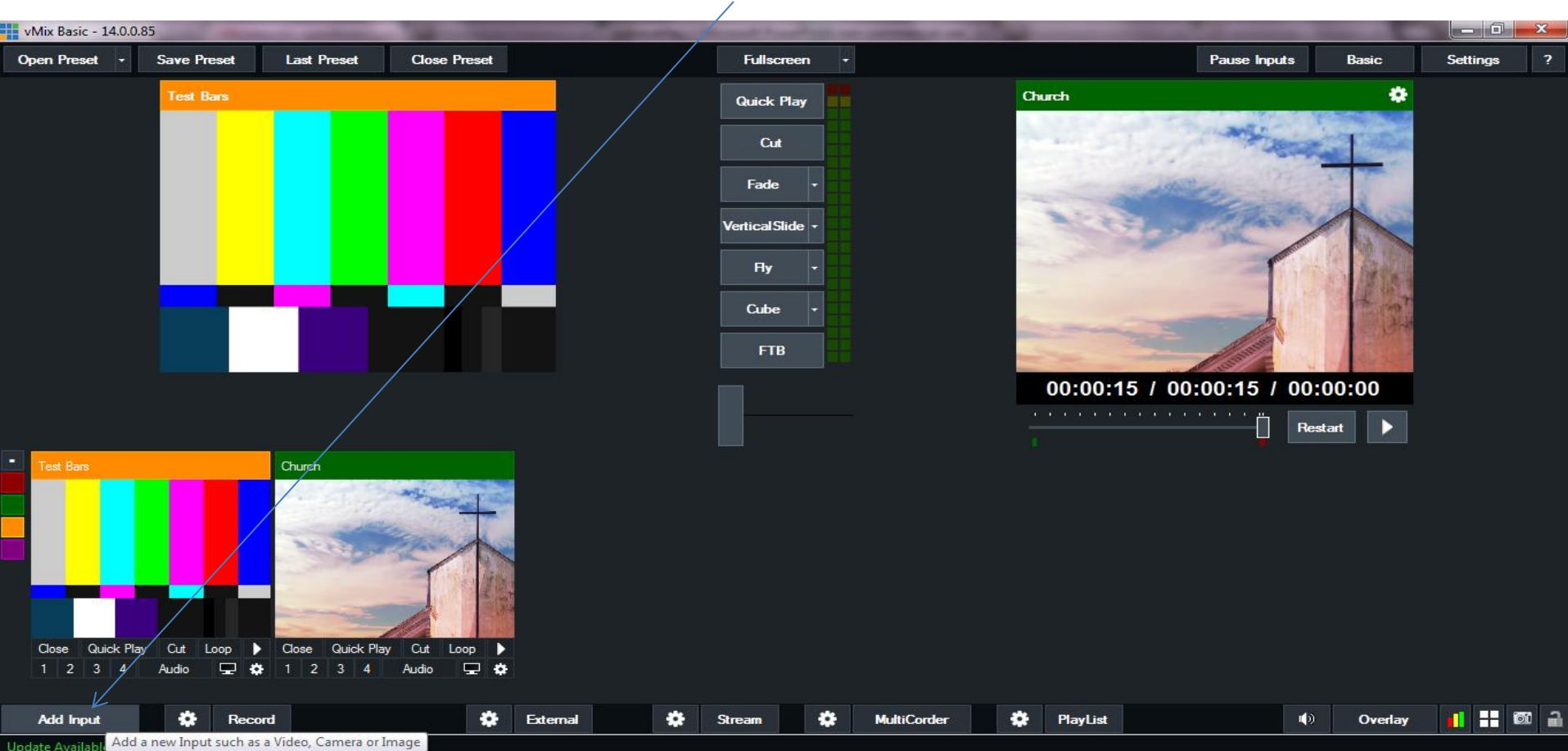


On to the 2<sup>nd</sup> way of putting overlays on your video

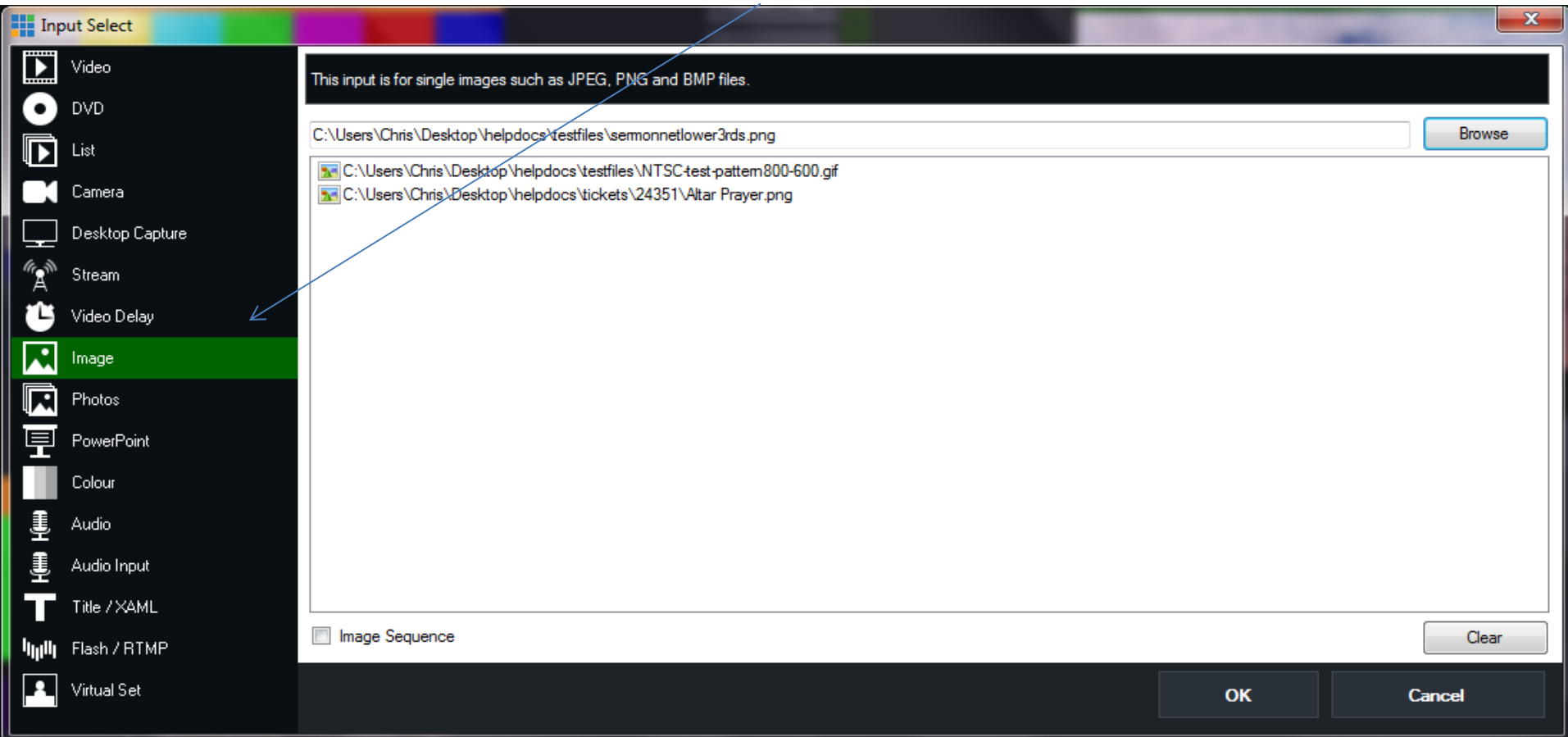
This process uses a static image that you can not change on the fly.  
But has a similar result.

If you need a help making a few of these overlays please [contact us](#).

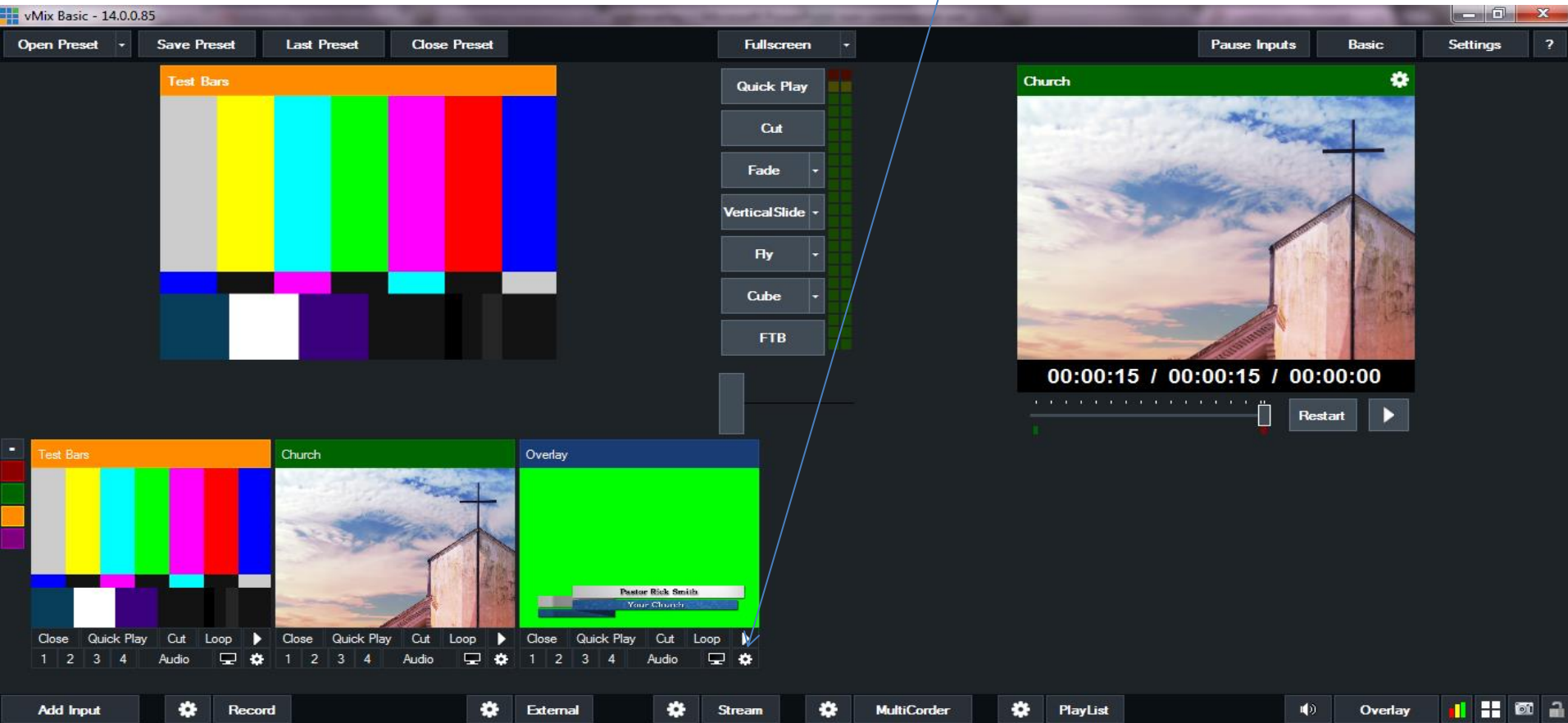
# Add input (lower left)

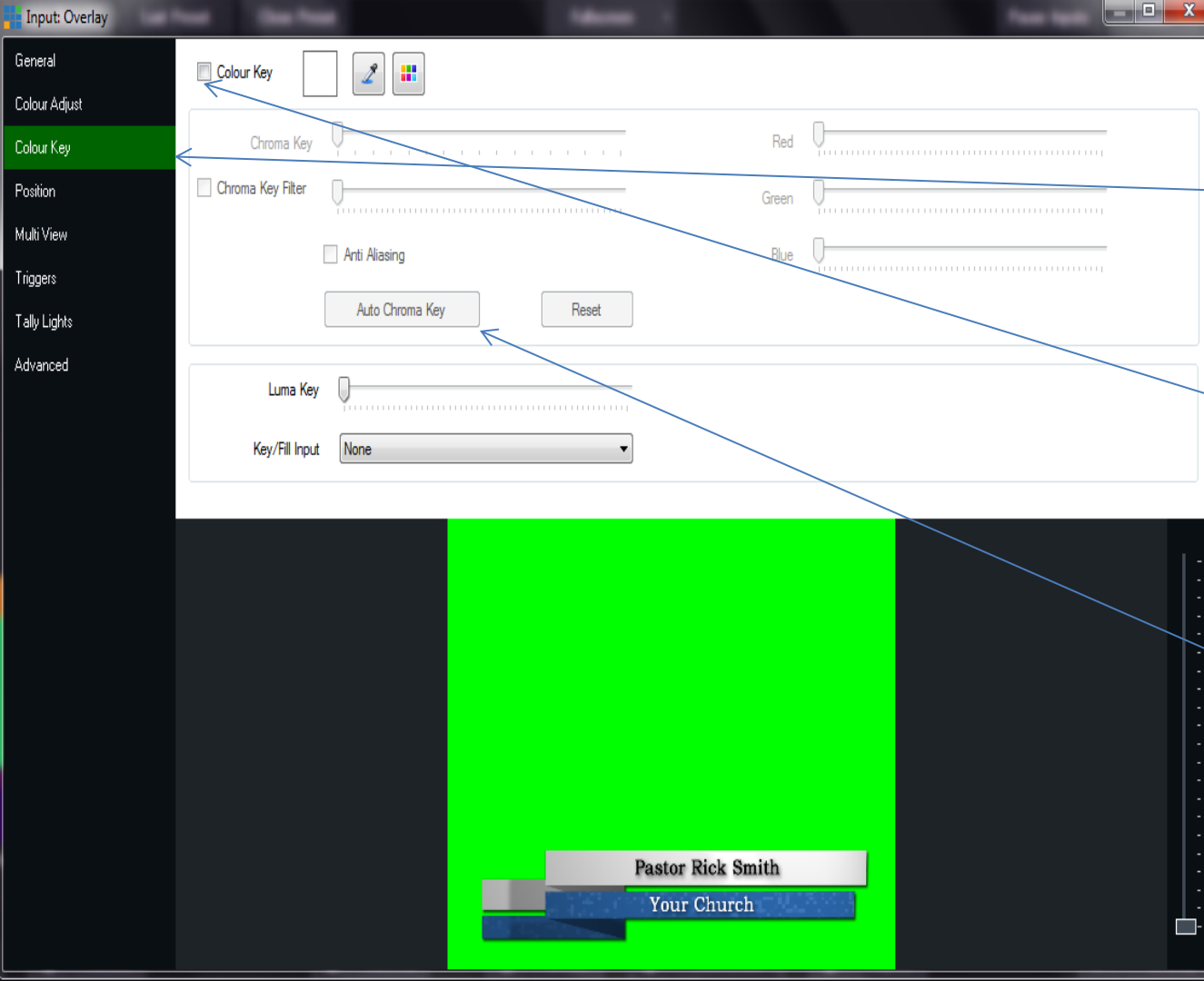


Click on Image input and select the image you created from your Photo Editor-Press OK



Your image is now listed as an input, press the gear icon to go into settings



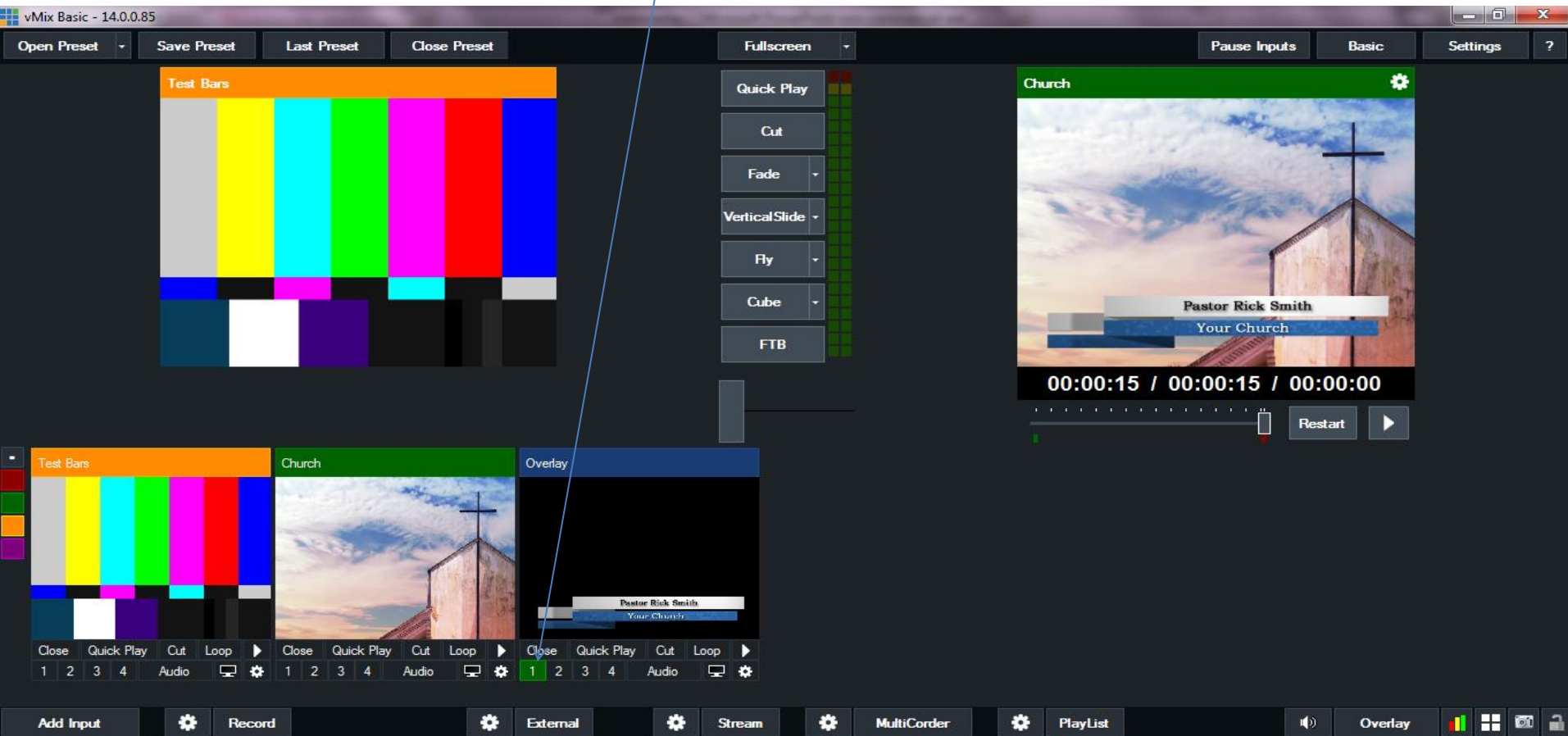


Select Color Key  
Tab

Turn the Color  
key on

Then press auto  
chroma key

To turn the overlay on/off press the “1” button



If you have any other questions please let us know, we are happy to help.

1 (800) 807-1014

[support@sermon.net](mailto:support@sermon.net)

By submitting a ticket within your Sermon Studio  
From Support > Submit a ticket

We do offer FREE remote assistance, if you could use some help let us know and we can set up a time.