



How to stream using Wirecast Software

REVISED 7/21/2021

Download Wirecast



Wirecast Software is paid software that will allow you to stream.

As of 7/21/2021 the latest version is 14.2.1

[Download the latest version.](#)



Get your credentials

The screenshot displays the Sermon Studio Dashboard interface. On the left is a dark sidebar with the 'sermon.net' logo at the top and a menu containing: Home (with a house icon), Episode Manager (with a list icon), Delivery Manager (with a camera icon), Studio Settings (with a gear icon), My Account (with a person icon), and Stats (with a bar chart icon). The main content area has a top navigation bar with 'sermon.net', 'Go to Simple Mode' (with a triangle icon), and 'Support' (with a speech bubble icon). Below this, the page title 'Sermon Studio Dashboard' is shown, along with a 'Home' breadcrumb and a language selector ('Select Language' with a dropdown arrow) and 'Powered by Google Translate'. A form for 'New Episode name' with a red asterisk and a placeholder 'Enter title of episode' is followed by an orange 'Create New Episode' button. The 'Live Stream Shortcuts' section contains four tiles: 'RTMP' (with an 'RTMP' label and 'RTMP Credentials' text), 'Simulcasting' (with Facebook and YouTube logos), 'Stream from Browser' (with a network icon), and 'Live Recordings' (with a video camera icon). The 'Quick Links' section at the bottom has six tiles: 'Episode Archive' (with a download icon), 'Media Centers' (with a monitor and plus icon), 'Playlist / RSS' (with a list icon), 'Stats' (with a bar chart icon), 'App Manager' (with a gear and phone icon), and 'Media Bank' (with a folder and star icon). An orange arrow points from the bottom of the screen to the 'RTMP Credentials' tile.

Login to your www.sermon.net account >RTMP Credentials

Get your credentials

sermon.net

Home

Episode Manager

Add New Episode

Episode Archive

Media Bank

Stream from Browser

Master Live Episode

Delivery Manager

Studio Settings

My Account

Stats

Go to Simple Mode

Support

Home >> Episodes Archive >> Episode >> Live Broadcast

Select Language

Powered by Google Translate

< Previous Episode

Next Episode >

Live Stream

Master Live Episode

View in Media Center: <https://pwoodtech.sermon.net/20860780>

View Link Copy Link

☒ Show in Player
 ☐ Podcast

f

t

e

+

Duplicate Episode

Upload Media

Live Broadcast

Details

Categories

Media / Upload

Player

Modules

Schedule

Playlists

Stream Credentials

Restream / Simulcast

Stream from Browser

Live Recordings

RTMP STREAM CREDENTIALS

What live encoding software are you using?

2 lines (OBS, vMix, ATEM, ...)

Server url:

rtmp://stream.sermon.net:80/live/

Copy Link

Stream key :

livefor20860780_tb1628_in1_vb1500_ab128_fps1920x1080:

Copy Link

Email Stream Credentials to:

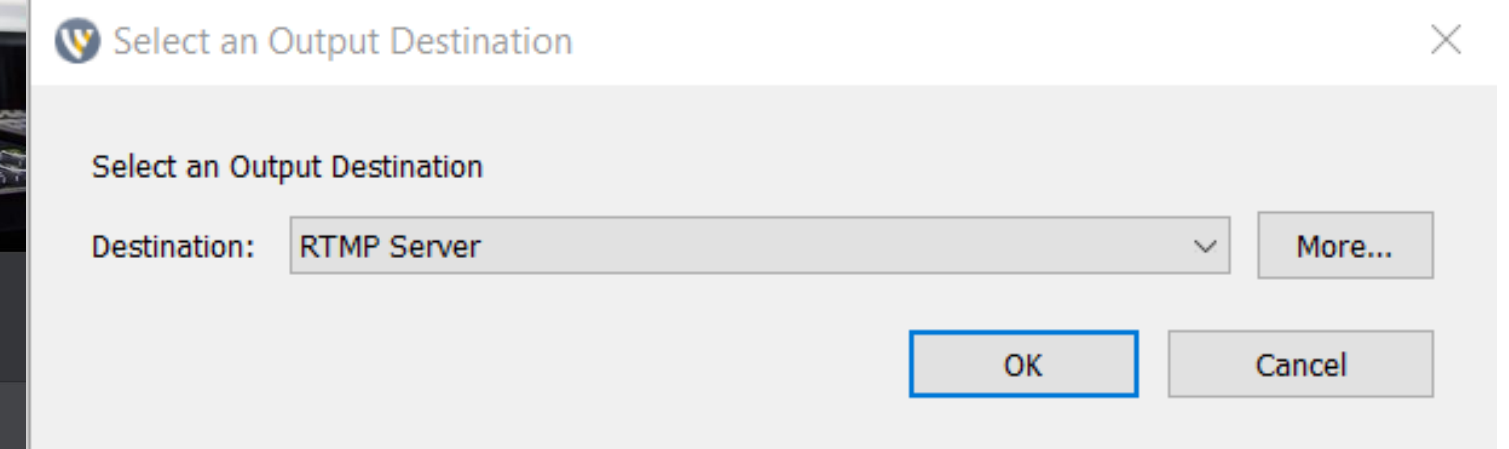
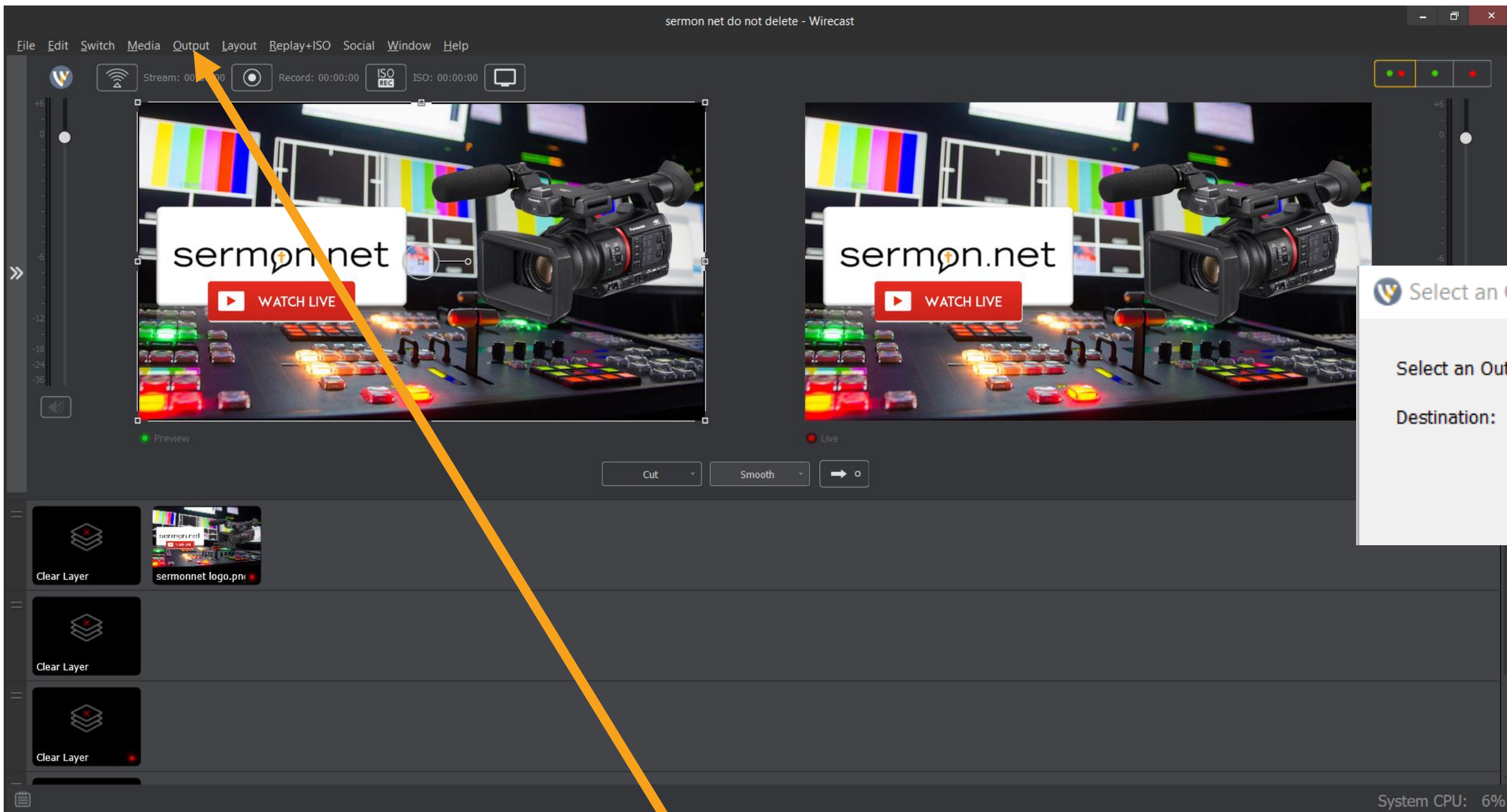
youremail@sermon.net

Send

Click on stream credentials

Copy & Paste Stream credentials into Wirecast

Setup Wirecast



Click on Output > Destination is RTMP

Setup Wirecast



Output Settings

RTMP Server

☒ sermon.net

Name: sermon.net

Destination: RTMP Server More... ⚙️

Encoding: Default: 720p30 (2Mbps) x264 H.264 ⚙️

Audio Track Selection: Track 1 Map

Address: `rtmp://stream.sermon.net:80/live/103667`

Stream: `livefor20712780_tb1628_in1_vb1500_ab128_fps` Open FMLE XML File

User Agent: Wirecast/FM 1.0 Set Credentials...

Bitrate: 2378 k

Location: `rtmp://stream.sermon.net:80/live/103667/livefor20712780_tb1628_in1_vb1500_ab128_fps1920x1080?key=c1f8dfc6&rec=disk`

Stream Delay: 0 seconds

Add... Remove OK Cancel

Set your Name, Address is Server Key, & Stream Name is Stream Name/Stream Key

Bitrate & Resolution



Encoder Presets

Encoder Preset: Default: 720p30 (2Mbps) x264 H.264

☒ Video Encoding

Encoder: x264

Width: 1280

Height: 720

Frames per second: 30

Average bit rate: 2250 kbits/sec

Quality: 3 - (Very Fast encoding) Default

x264 command line options:

Profile: Baseline

Key frame every: 5 frames

☐ Timecode every: 30 frames

☒ Strict Constant Bitrate

☒ Keyframe Aligned

☒ Audio Encoding (AAC)

Channels: Stereo

Target bit rate: 128 kbits/sec

Sample rate: 48.000 kHz

Close Delete Save As... Save Help

Encode size(resolution)

SD 640x480 4x3 square

SD 640x360 16x9 widescreen

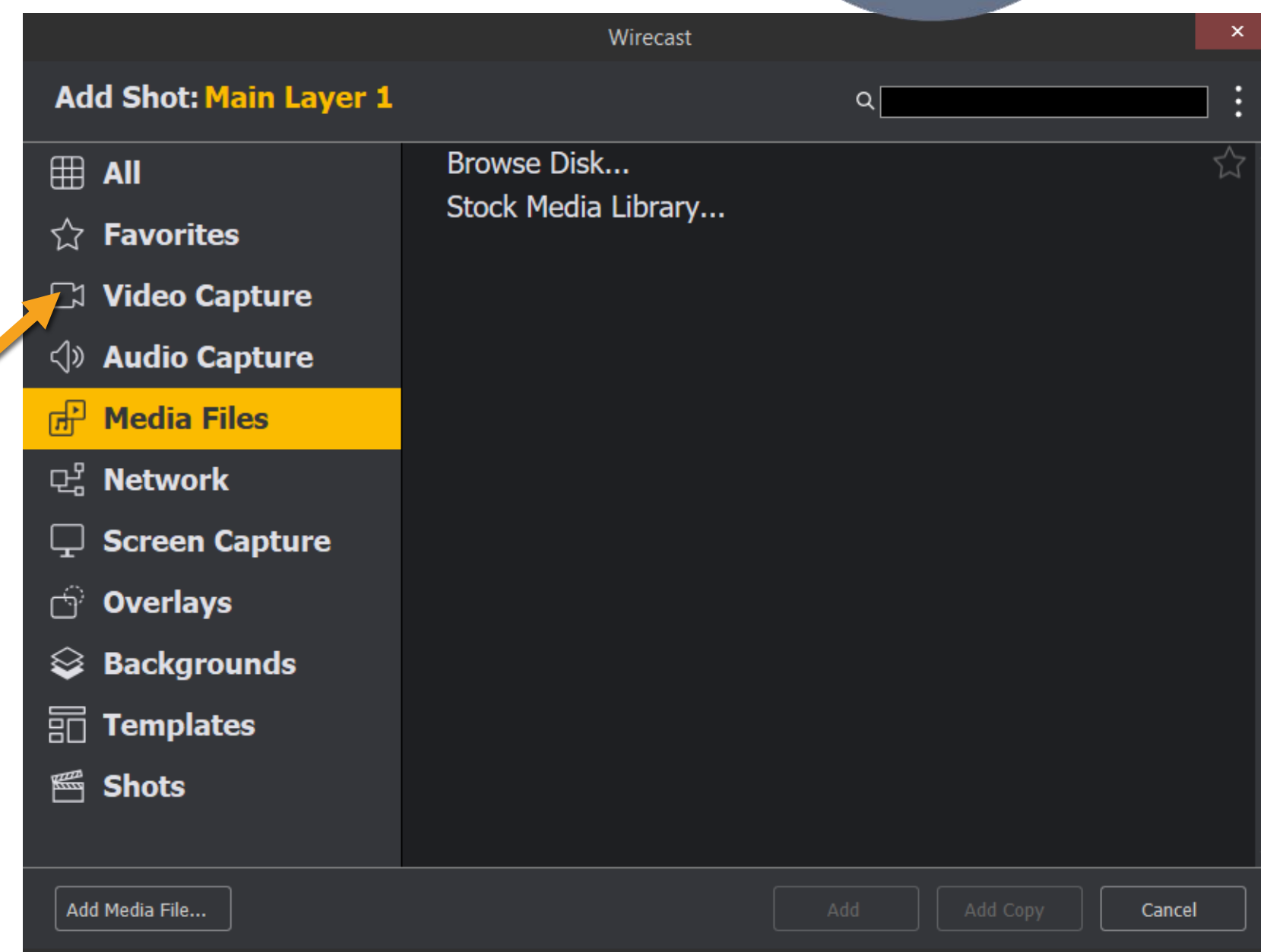
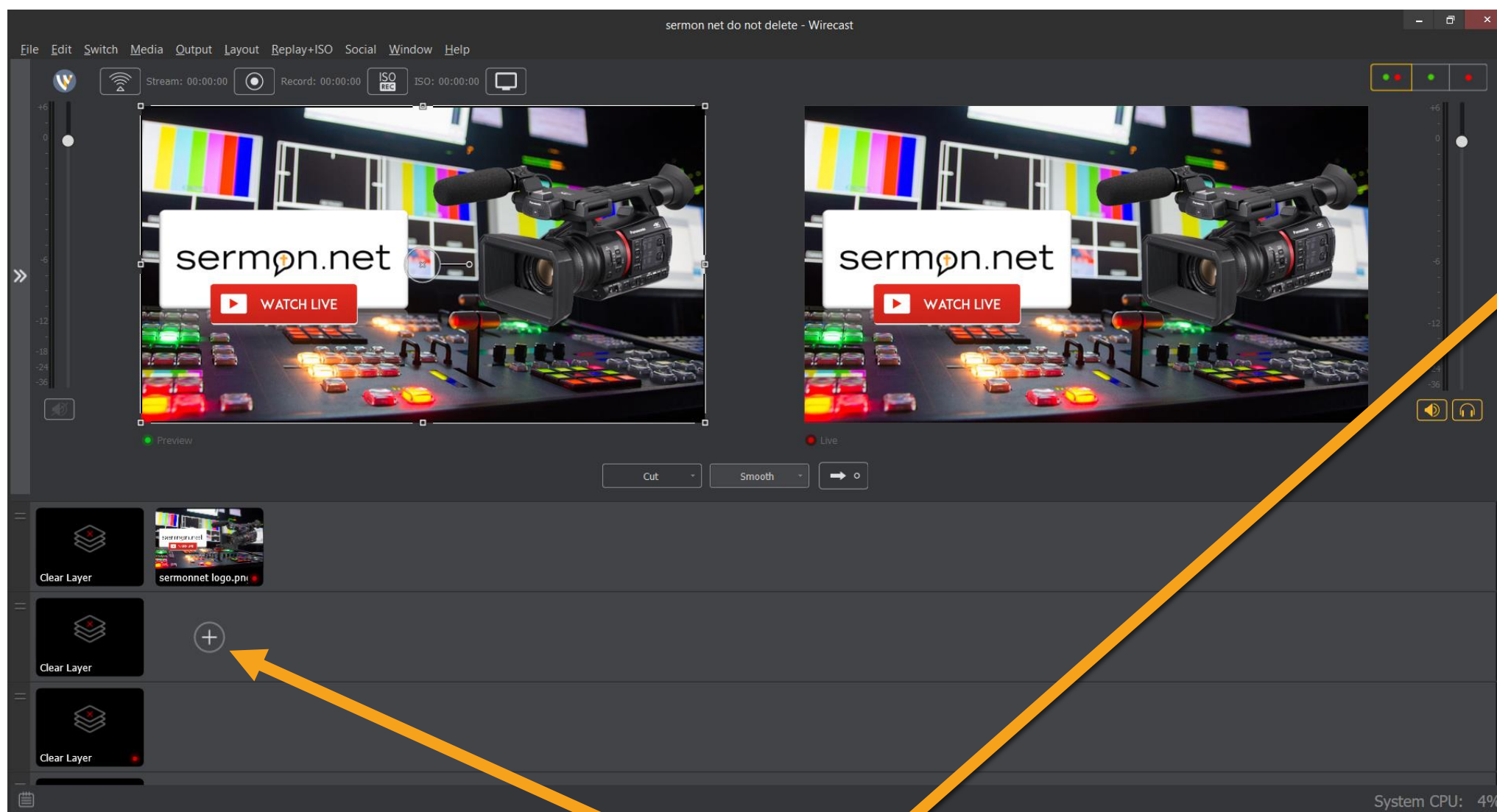
HD 1280x720 16x9 widescreen

HD 1920x1080 16x9 widescreen

Video bit rate will need to be set from anything ranging from 800kbs to 2500kbs

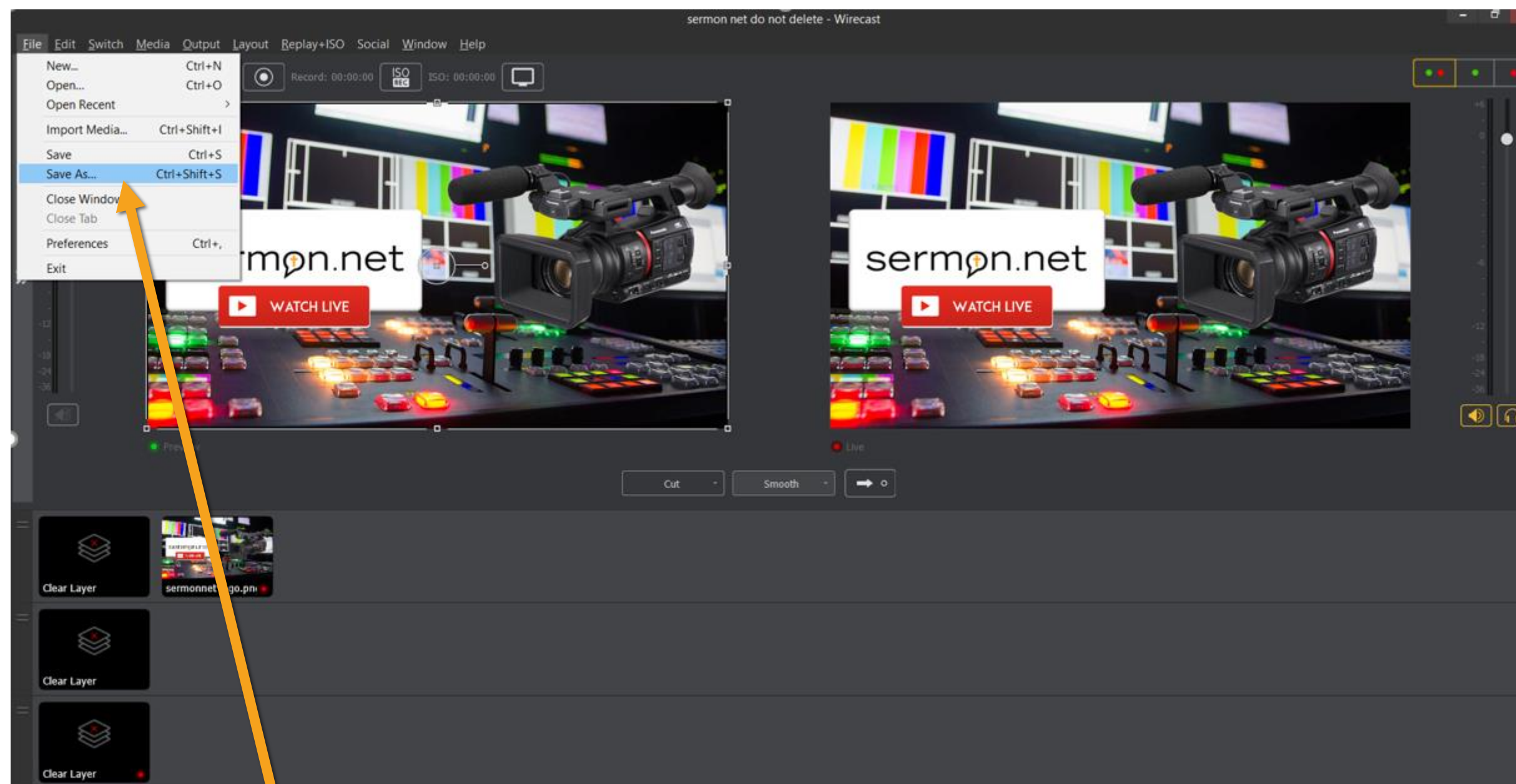
This is just a suggestion. Set to what you need.
Audio will need to be set from 64kbs to 128kbs

Add Your Input



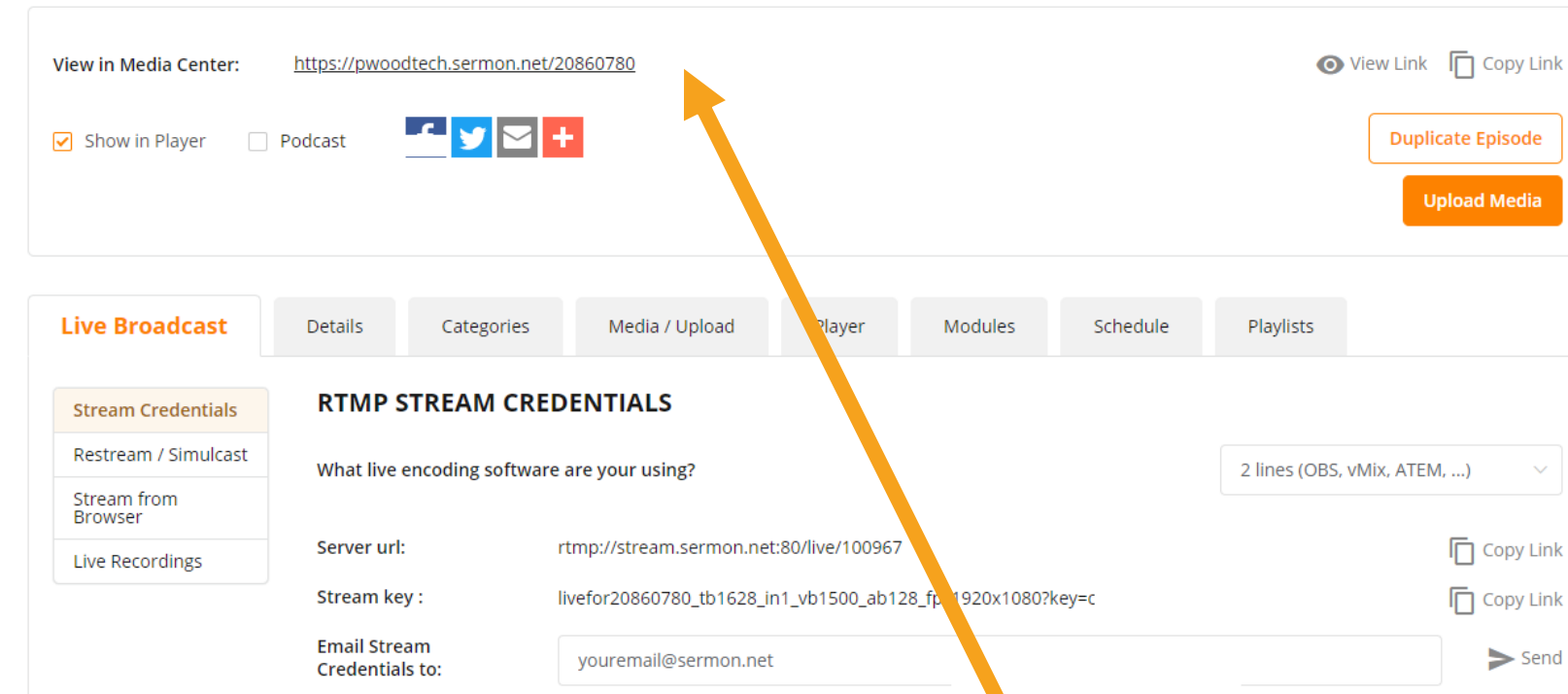
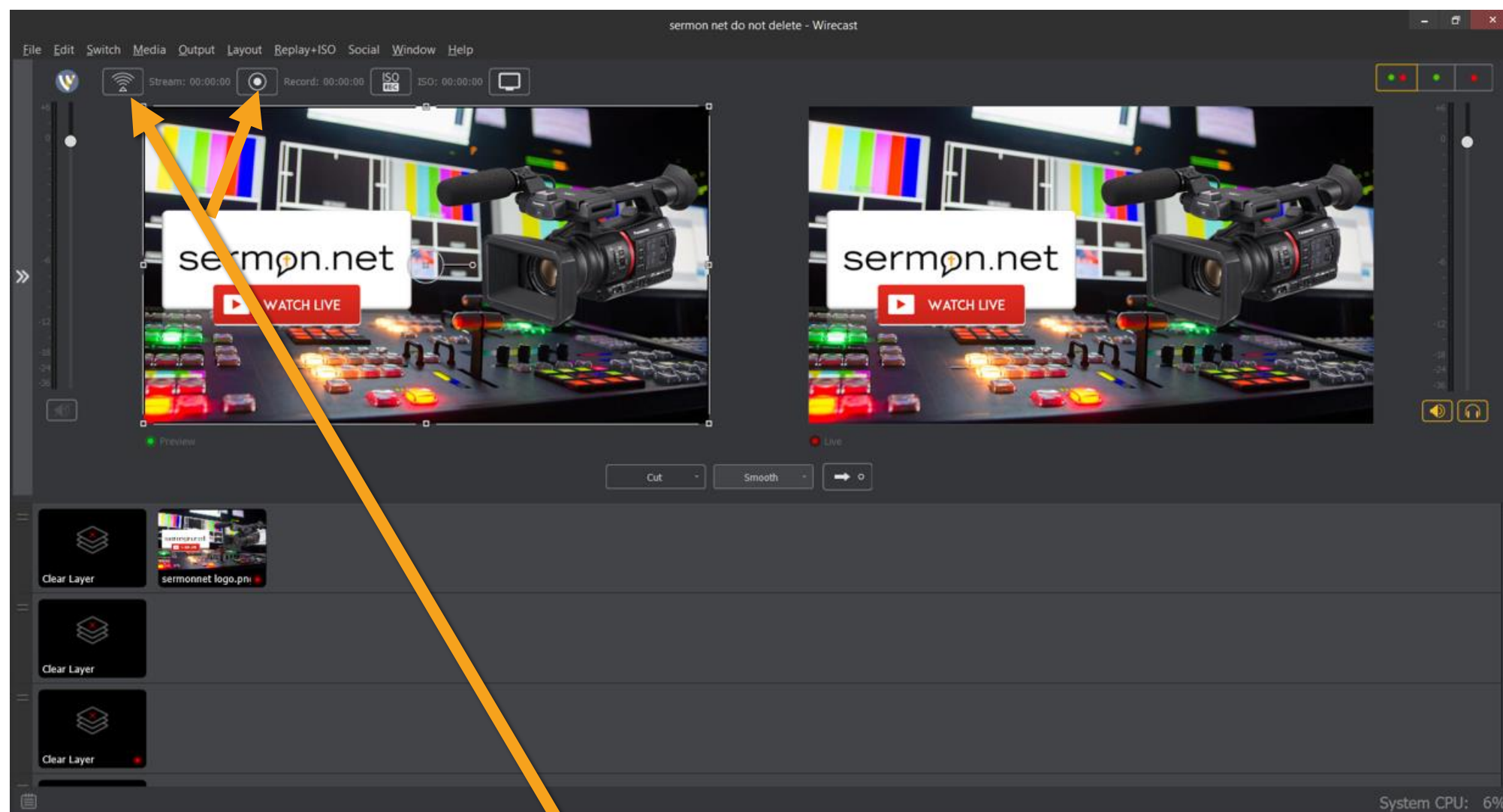
Click + Plus Button – Everything is an input

Save Your Wirecast Profile



Save your work. Click the Save As Button to Save the profile. You can open your profile to have all of your settings.

Your Ready To Stream



View your stream with the View In Media Center Link within your live episode

To Stream Click, Stream – Best practice is to also record locally as well – Note you would need to set up a record in the output

Best Practice

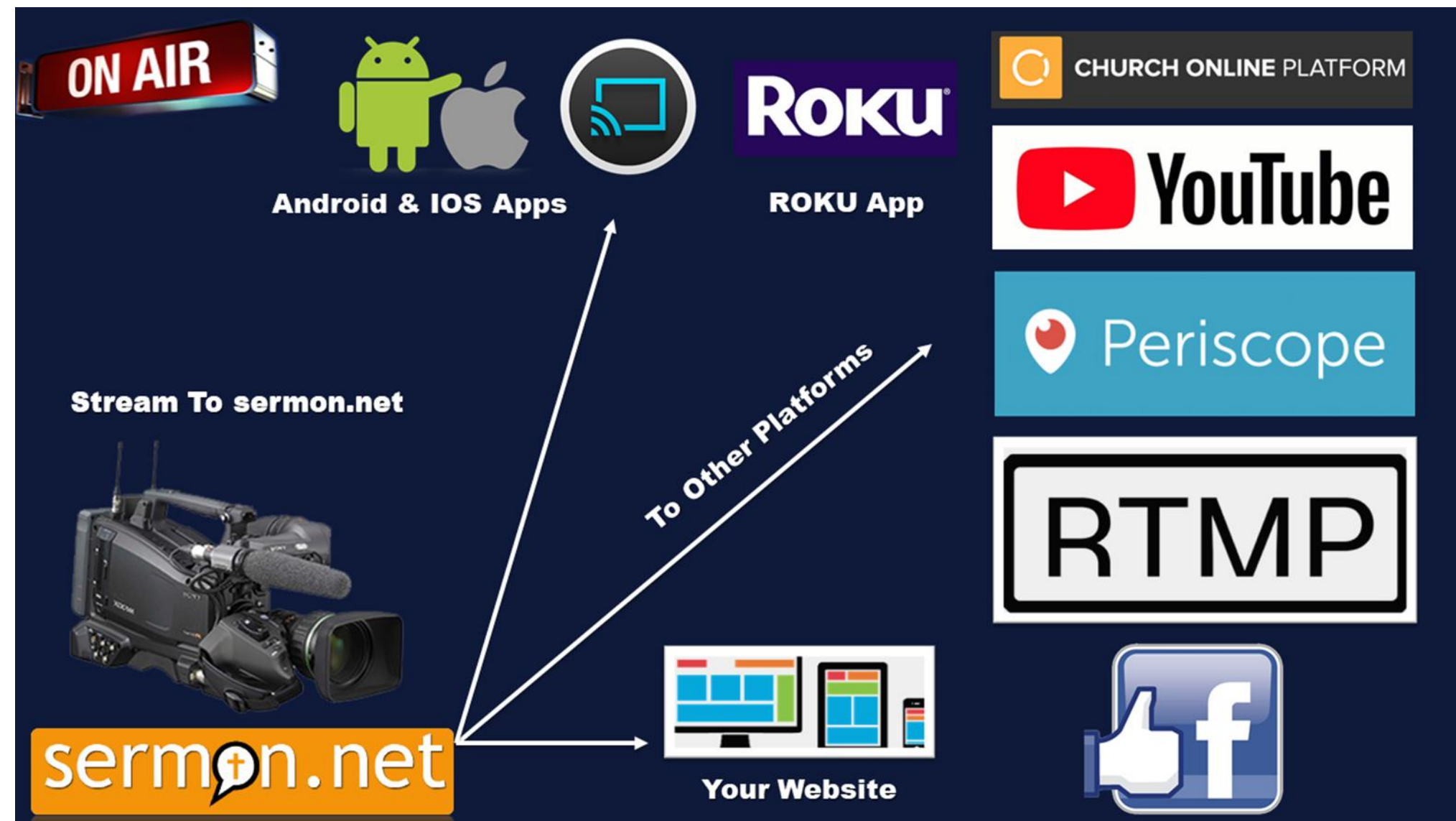


- If you are having trouble, please restart your computer
- To Start or Stop the recording – Press Record
- To Start or Stop the streaming – Press Stream
- If the stream breaks into several files. This means your stream will be dropping and you are overloading your computer.
- Wired Internet Connection Works the best

If you have any other questions, please let us know, we are happy to help. We do offer FREE remote assistance, if you could use some help let us know and we can set up a time to assist.



Restream To Other Platforms



Restream from your sermon.net account to YouTube, Facebook, & a custom platform